



Food Rescue + Tech

Jamie Anderson
Program Director at Denver Food Rescue

In this talk I will...

Who is Denver Food Rescue?

What technology do we use?

Hardware

Software - logistical management, data tracking and reporting, data analysis

Partners' software - gosh it would be nice if everyone could use the same thing!

Wishes for future

Q&A





- Decentralized
- By Bike
- Every day, except Thanksgiving and Christmas
- 50 food donors
- 20 No Cost Grocery Programs
- 700,000 lbs of food/year
- 8 staff
- 150 active volunteers

Hardware - electric bikes



Software: Logistical Management

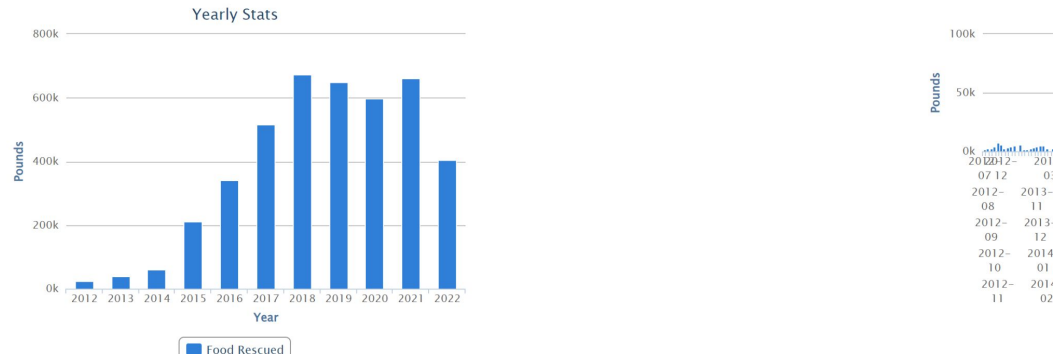
Started with the Food Rescue Robot

Created in 2012 by volunteers

Still used by Boulder Food Rescue

Denver Food Rescue

Stats and Charts



Software: Logistical Management

Now using Get Connected +
Grasshopper

The screenshot displays a software interface for logistical management. On the left is a dark sidebar menu with the following items: DASHBOARD, VOLUNTEERISM, PROGRAMS, BENCHMARKS, EVENTS, HOURS (31), OPPORTUNITIES, QUALIFICATIONS, RESPONSES, SCHEDULING (highlighted in red), TEAMS, USER GROUPS, USERS, COMMUNICATION, CONTENT, and MODULES. The main content area shows a breadcrumb trail 'Responses > Schedule' and a 'Schedule' heading. Below the heading is a legend for shift capacity: a pink circle for 0-24%, an orange circle for 25-49%, a yellow circle for 50-74%, a green circle for 75-99%, a dark green circle for full capacity, and a blue circle for unlimited capacity. A 'SHIFTS' tab is selected, showing a calendar for 'OCTOBER 2023'. The calendar grid shows shifts for Sun, Mon, Tue, and Wed. Shifts are represented by colored circles: pink for low capacity, orange for medium-low, yellow for medium, green for high, dark green for full, and blue for unlimited.

[Responses](#) > [Schedule](#)

Schedule

Hover over an item for more information. Click on an opportunity or a volunteer name to see possible actions you can take.

- This shift is between 0% and 24% of capacity
- This shift is between 25% and 49% of capacity
- This shift is between 50% and 74% of capacity
- This shift is between 75% and 99% of capacity
- This shift is full
- This shift has an unlimited capacity

SHIFTS | USER RESPONSES

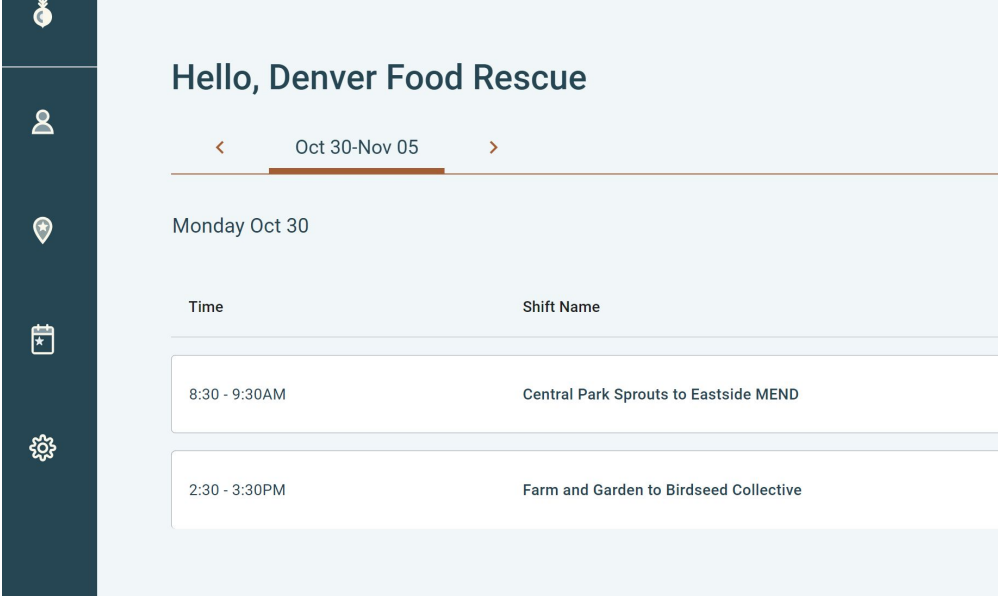
< **OCTOBER 2023**

Sun	Mon	Tue	Wed
1 <ul style="list-style-type: none">● SUNDAY Whole Foo.○ SUNDAY Whole Foo.○ SUNDAY Whole Foo.○ SUNDAY Mississip...○ SUNDAY Grow Loca.	2 <ul style="list-style-type: none">● Pinemelon Dairy ...● MONDAY Pinemelor● MONDAY City Harv..● MONDAY Central P...● MONDAY REPLATE T	3 <ul style="list-style-type: none">● TUESDAY S. Broad...● TUESDAY Wadswort.● TUESDAY Central ...● TUESDAY Pinemelo..● TUESDAY REPLATE ..	4 <ul style="list-style-type: none">● WEDNESDAY We Do● WEDNESDAY Pinem.● WEDNESDAY City H.● WEDNESDAY Centra● WEDNESDAY City H.



Software: Logistical Management

Looking forward to Rootable



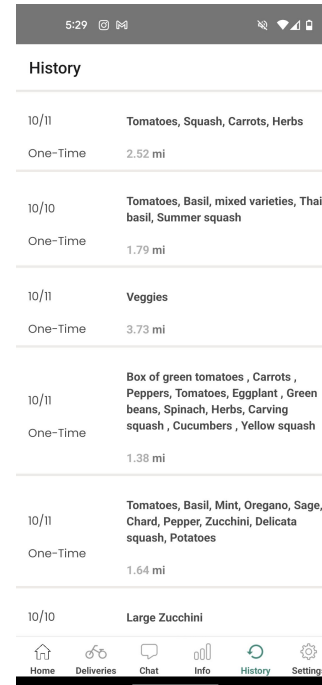
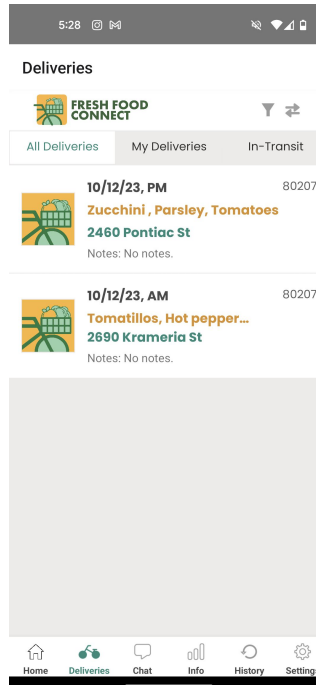
The screenshot shows a user interface for a logistical management system. On the left is a dark blue vertical sidebar with five white icons: a location pin, a person, a location pin with a star, a calendar, and a gear. The main content area is light blue and displays the following information:

- Greeting: "Hello, Denver Food Rescue"
- Navigation: A date range "Oct 30-Nov 05" with left and right arrow icons.
- Selected Date: "Monday Oct 30"
- Table of Shifts:

Time	Shift Name
8:30 - 9:30AM	Central Park Sprouts to Eastside MEND
2:30 - 3:30PM	Farm and Garden to Birdseed Collective

Software: Logistical Management

Fresh Food Connect



Software: data tracking

What do we track?

- Who uses our programs

- Who does our volunteering

- How much food we rescue

Why track it?

- Better serve our community

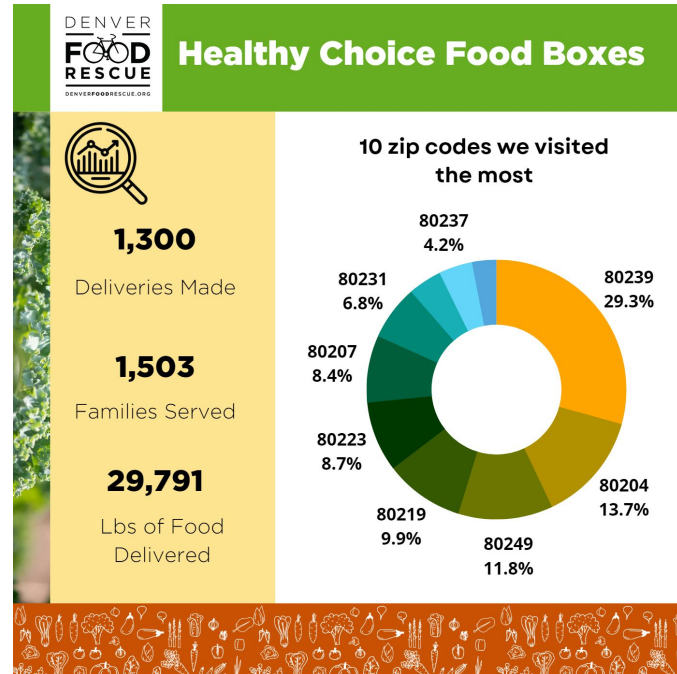
- Grant reporting

- Donor relationships + tax reporting



Software: Data Reporting + Presentation

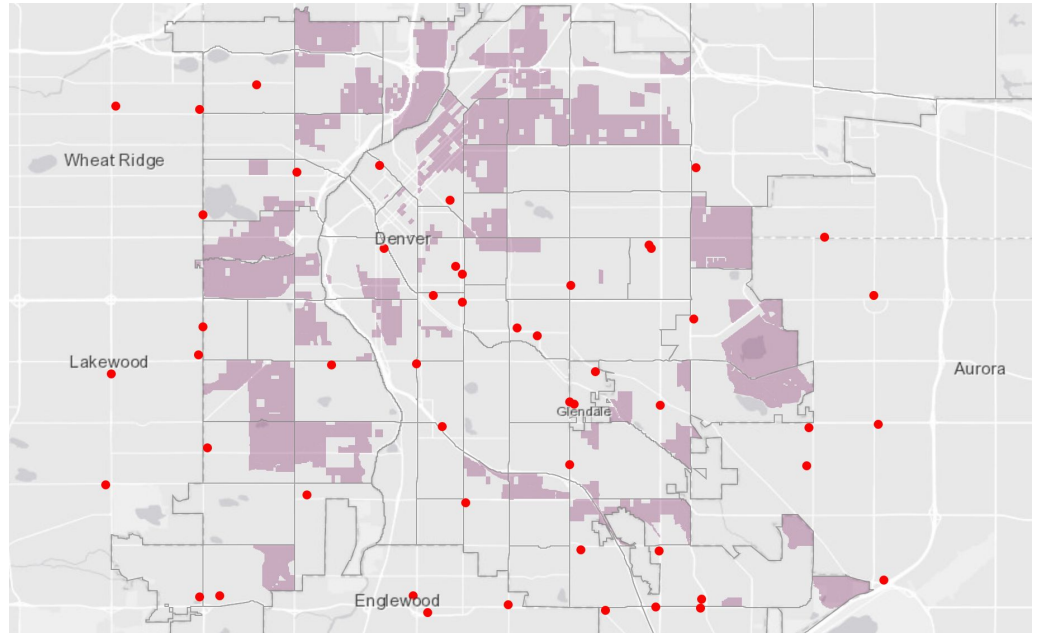
Google Sheets + Canva



Software: Data Reporting + Presentation

Geographical Information Systems (GIS) & other forms of mapping

Denver Food Systems (2021). Red dots are supermarkets; purple shaded areas have limited food access.



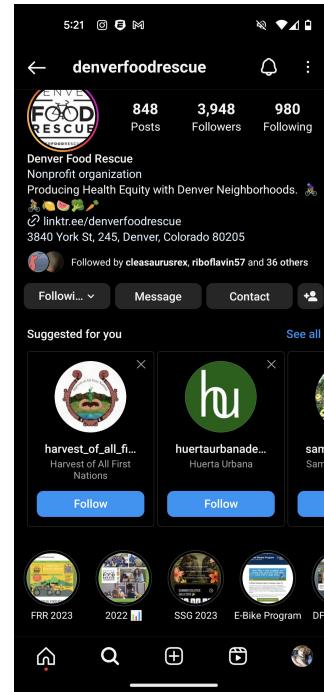


Software: Data Reporting + Presentation

Social Media (of course!)

Each has a different audience - think about demographics you want to prioritize

Instagram BY FAR most effective for us



Partners' Software

Food donors' software - there's so many different kinds!



Wishes for the future

Unify software

Software that is more accessible for
volunteers and program participants

Software that is a tool - not seen as a
solution!



Q & A

Please don't hesitate to contact me if you have questions after the talk!

jamie@denverfoodrescue.org

